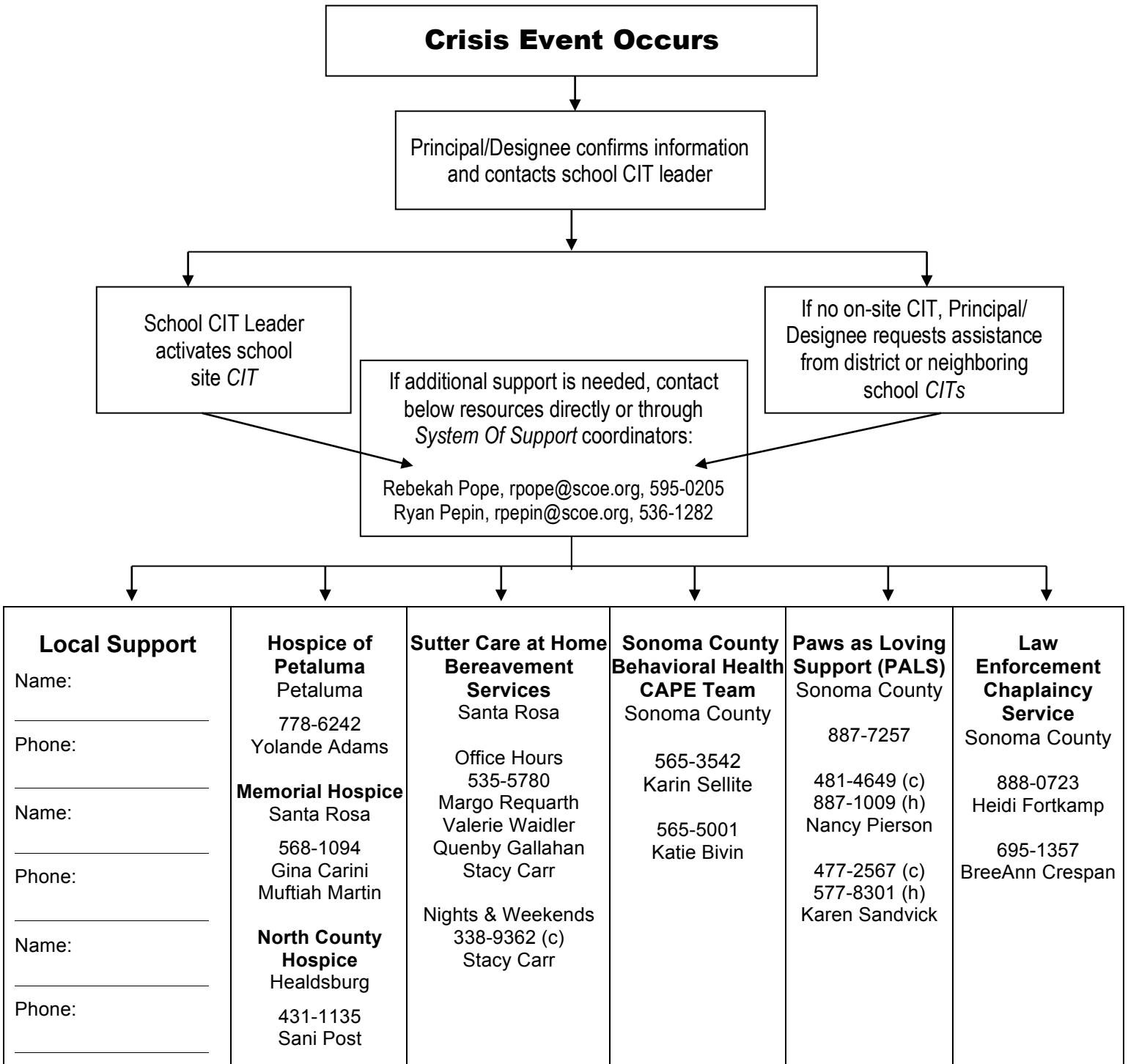


# School Crisis Intervention Team

## Sonoma County System of Support Flowchart

[scoe.org/SOS](http://scoe.org/SOS)



### 24-hr Emergency Mental Health Hotlines

North Bay Suicide Prevention Hotline	855-587-6373
Sonoma County Suspected Child Abuse Hotline	800-870-7064
Psychiatric Emergency Services	800-746-8181
Verity Sexual Assault Hotline	707-545-7273
YWCA Domestic Violence Services	707-546-1234

### When calling for assistance, be prepared to provide the following information:

- Identify yourself
- Describe the nature of the crisis
- Name and location of the school
- Contact information for the principal/designee or CIT Leader